



# Ensure Your Team Is Compliant

Get notified about important changes in your license professionals' status automatically.

EverCheck provides the most trusted compliance and professional management solution at scale. Our industry-leading technology streamlines the monitoring of licensing, sanctions, and exclusions data delivers automated notifications and workflows designed for enterprise management, and provides an intuitive path to compliance for licensed professionals through board-approved education and training.



Nearly 400 hospitals and health systems nationwide choose EverCheck to stay confident in their compliance. Here is why:

## Most Reliable Primary Source Data in the Market Today

EverCheck delivers the most reliable, accurate, and timely primary source healthcare license, sanctions, and exclusions verifications, including OIG, LEIE, GSA, SAM, and all State Medicaid Exclusion data.

### During verification, EverCheck Captures:

- The license status and expiration date
- The name to whom the license is issued
- Whether the license has any disciplinary actions (if applicable)



Automated monitoring of licensure, sanctions, and exclusions data catches status changes in real-time and triggers actionable notifications to ensure ongoing compliance and reduce daily risk exposure.

## Centralized Source of Truth for Position Data

EverCheck's Positions Manager tool allows you to automatically calculate whether employees and candidates have all valid and required licensure and certification requirements for their roles.

Positions Manager uses "and/or" and "to be obtained" logic in requirements mapping to support organizations' complex job requirement mapping scenarios. By defining your requirements in Positions Manager, EverCheck eliminates the confusion around who is required to have what and automatically calculates each licensed professional's requirement status.

## Confidence in Your Company during regulatory audits

EverCheck makes it simple to provide proof of compliance during a regulatory survey. You can pull any caregiver's verification history with a quick search or provide an entire verification history. If your surveyor prefers, you can also print the screenshots taken directly from the primary source, including a date stamp of when the screenshot was captured.



## Better Transparency Between HR, Leaders, and Healthcare Licensed Professionals

The EverCheck Wallet employee-facing application was designed to build better communication channels between your team. EverCheck Wallet allows caregivers to see what's required for their role and submit updates as necessary from all their desktops or smartphone. You can request information from your employees that show up as to-do's in their EverCheck Wallet Inbox, helping them stay on top of deadlines.



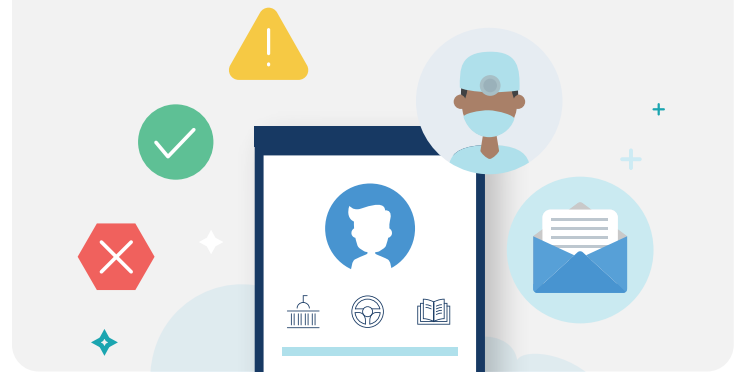
### Bi-Directional Integration

Through a bi-directional integration, EverCheck delivers the most up-to-date primary source data to your HR system daily. While your team can certainly use EverCheck as your source of truth for whether your employees comply, you can also trust that the information in your system is as accurate as the primary source itself.



### User-Friendly Solution

EverCheck is built with user experience at the forefront of its product design because we believe that "Good Design is Good Business." With clarity and consistency throughout the platform, our software feels intuitive, simple, and people-friendly. Evercheck offers data at a glance in the easy-to-read dashboards and filterable reporting tools for more granular insights.



### A Team of Ours That Feels Like A Team of Your Own

We believe in building relationships with our clients because it allows us to foster trust and loyalty with your team. From the initial discovery phase all the way through implementation and beyond, you'll have a designated point of contact there to support you every step of the way.

